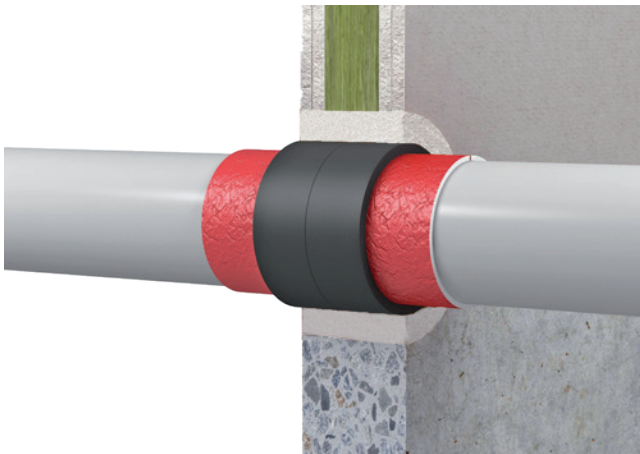


System KSL-W

Fire-resistant sealing system for plastic pipes in connection with soundproofing tubes, FEF and PEF insulation



Fire resistance class

max. EI 180 in acc. with EN 13501-2

Field of application



- plasterboard walls, solid walls, solid floors, shaft walls

System data

Certificate of usability		ETA 18/0885, KB 319061402-A, Rev. 2 KB MA 39-22-02052
Thickness of building element	Wall	≥ 100
	Floor	≥ 150
	Shaft wall	≥ 40
Thickness of seal	Wall	≥ 100
	Floor	≥ 150
	Shaft wall	≥ 100

All specifications in mm

Services

		max. Ø*
	Combustible pipes	≤ 160
	Multilayer pipes	≤ 75

*All specifications in mm

System KSL-W

Products



KSL-W Fire protection wrap

Roll, 10 m × 50 mm self-adhesive
– Art. no. 15510
Roll, 20 m × 50 mm self-adhesive
– Art. no. 15520
Roll, 10 m × 100 mm self-adhesive
– Art. no. 15530



DG-SC

Cartridge, 310 ml – Art. no. 01157100



NOVASIT BM Fire protection mortar

20 kg bag – Art. no. 01161000
10 kg pail – Art. no. 01161010



FLAMMOTECT-A Filler

12.5 kg pail – Art. no. 01155134
310 ml cartridge – Art. no. 01155115



GFM Fire protection mortar

Fibre-free ready-mix dry mortar M20 / MG III
in accordance with EN 998-2
25 kg bag – Art. no. 01167000



BML Fire stop compound

5 kg pail – Art. no. 40050
12.5 kg pail – Art. no. 40125



General sealing material

Dimensionally stable, non-combustible (class A1 or A2-s1,d0 in acc. with EN 13501-1) material such as concrete, cement mortar, gypsum mortar



BMS Fire stop filler

5 kg pail – Art. no. 10500
12.5 kg pail – Art. no. 10125



Label

1 piece – Art. no. 14003



Mineralfaserplatte nach EN 13162

Reaction to fire class A1 in acc. with EN 13501-1
Melting point ≥ 1000 °C.
Nominal bulk density ≥ 150 kg/m³
Thickness ≥ 50 mm



Mineral wool

Reaction to fire class in acc. with EN 13501-1: A1
Melting point ≥ 1000 °C
10 kg bag – Art. no. 01183000

Recommended products:

Rockwool Hardrock® 040
Rockwool RP-GF 70
PAROC Pyrotech Slab 160

Further recommended products:

Knauf Insulation Power-teK LW STD
Rockwool ProRox LF 970